

munck

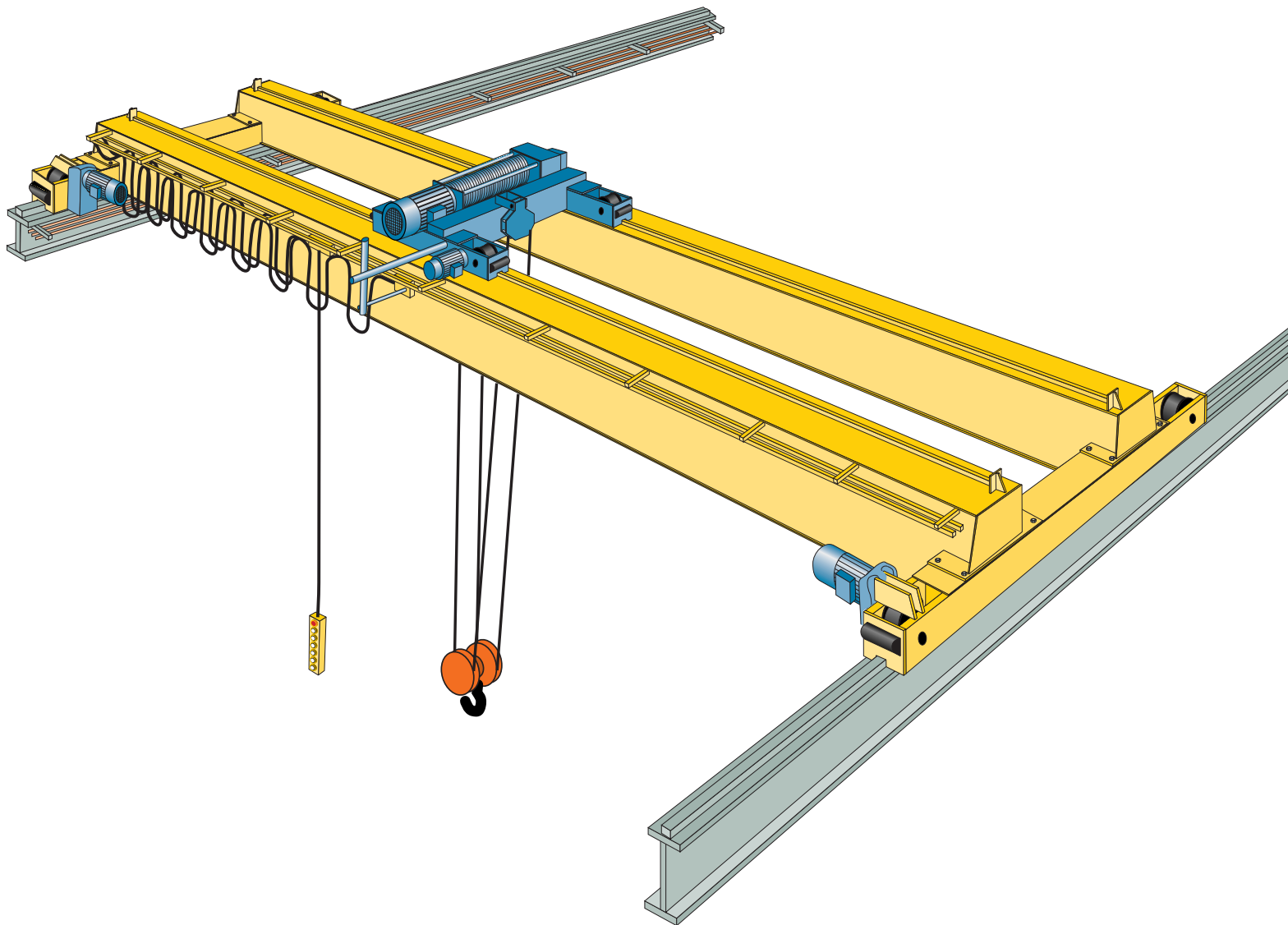
TOTAL CRANE SYSTEMS



MANUFACTURERS OF OVERHEAD CRANES AND HOISTS

Top Running, Double Girder Overhead Cranes

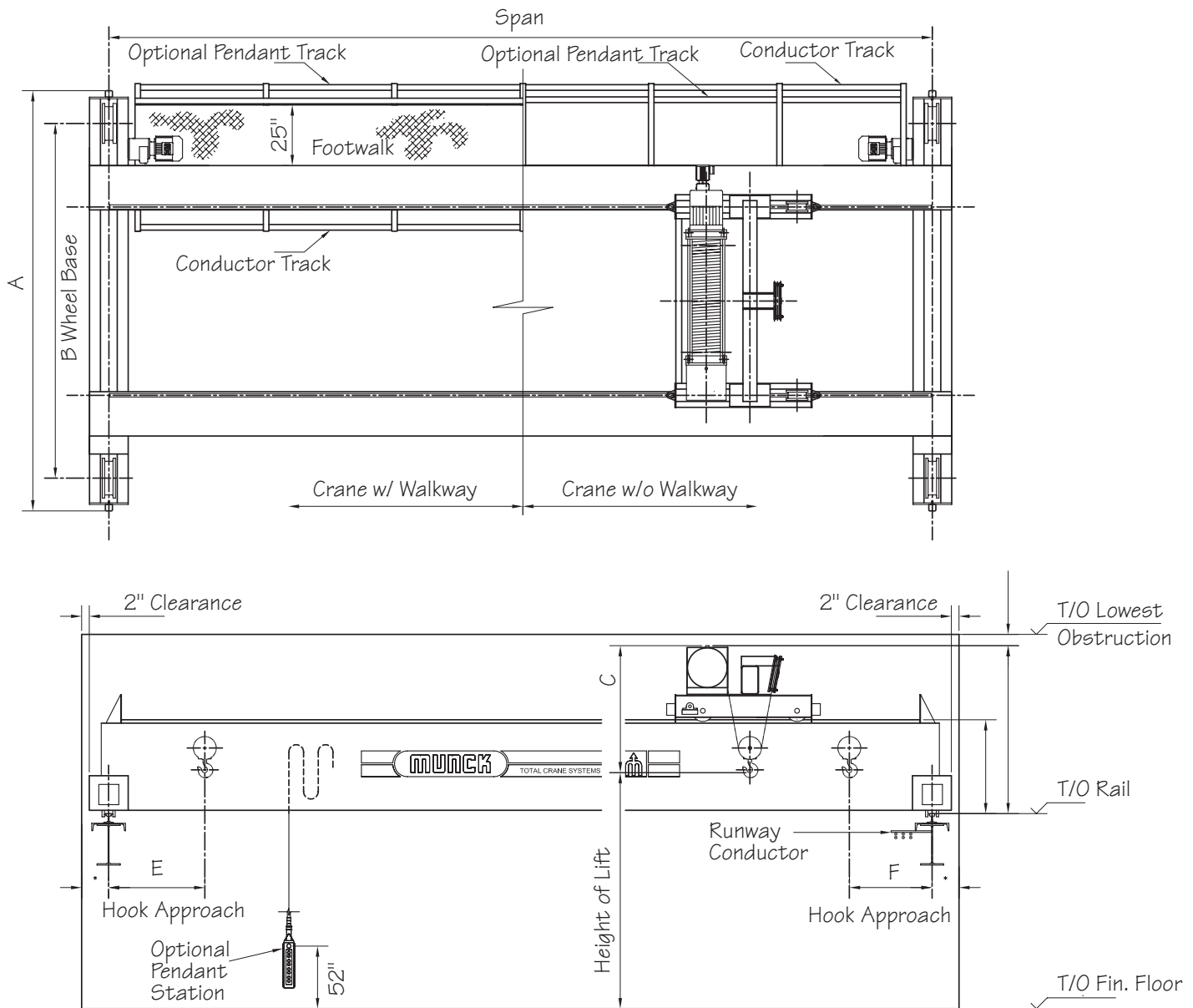
Engineering & Design Data





Crane Reference Diagram

All data may be referenced to the following crane diagram. Travel speeds are nominal and may vary $\pm 10\%$. Other travel speeds are available on request. Dimensions E & F are given at high hook and are measured from the centerline of the runway rail to the centerline of the hoist hook and do not take into consideration the downshop conductor system.



Munck Cranes Inc. assumes no responsibility for, but not limited to, any events or damages which occur as a result of the use of any data contained in this brochure. It should be noted that these figures are supplied to give a general understanding of the specifications relating to any particular capacity of top running, double girder, overhead crane and should not be taken as a basis for construction of any kind. All calculations for actual work to be performed should be done so only by a recognized professional in the industry and only after the unique situations and circumstances to the particular job or job site are considered.



HOIST DATA							CRANE DATA							
Crane Capacity (Tonnes)	Hoist Model	Available Lift Height (ft.)	Trolley Hoist Weight (lbs.)	C	E	F	Hoist Speed (ft./min.)	SPAN (ft.)	A	B	D (in.)	G (in.)	Crane Weight Excluding Hoist (lbs.)	Maximum Static Wheel Load (lbs.)
15	3131-1426 3131-2426 3131-3426 3131-4426	26 36 49 70 *	2115 2180 2325 2465	3'-3"	2'-8"	2'-6"	Single Speed: 16	-20	11'-0"	9'-6"	21	47	5165	16810
								21-25	11'-0"	9'-6"	21	47	6530	17590
								26-30	11'-0"	9'-6"	24	50	7835	18215
								31-35	11'-0"	9'-6"	24	50	10295	19040
								36-40	11'-0"	9'-6"	27	53	11990	19625
								41-45	11'-0"	9'-6"	38	64	11555	19635
								46-50	11'-2"	9'-6"	38	64	13710	20275
								51-55	11'-2"	9'-6"	41	67	15600	20830
								56-60	11'-2"	9'-6"	43	69	17515	21375
								61-65	11'-2"	9'-6"	49	75	20105	23500
								66-70	13'-9"	12'-0"	49	75	22120	22630
								71-75	13'-9"	12'-0"	49	75	25015	23395
								76-80	13'-9"	12'-0"	50	76	27280	24000
								81-85	16'-9"	15'-0"	50	76	32200	25260
								86-90	16'-9"	15'-0"	52	78	34755	25930
								91-95	16'-9"	15'-0"	53	79	38345	26855
96-100	16'-9"	15'-0"	56	82	41350	27625								
20	3141-1426 3141-2426 3141-3426 3141-5426	26 39 63 * 82 *	990 1015 3235 3565	3'-5"	2'-8"	2'-6"	Single Speed: 16	-20	11'-2"	9'-6"	20	49	6000	22310
								21-25	11'-2"	9'-6"	24	53	7320	23235
								26-30	11'-2"	9'-6"	25	54	9375	24145
								31-35	11'-2"	9'-6"	28	57	11680	25005
								36-40	11'-2"	9'-6"	39	68	11530	25180
								41-45	11'-2"	9'-6"	42	71	13100	25740
								46-50	11'-3"	9'-6"	46	75	15070	26360
								51-55	11'-3"	9'-6"	50	79	17575	27095
								56-60	11'-3"	9'-6"	50	79	19655	27705
								61-65	11'-3"	9'-6"	50	79	22000	28370
								66-70	13'-9"	12'-0"	51	80	25750	29370
								71-75	13'-9"	12'-0"	53	82	28410	30100
								76-80	13'-9"	12'-0"	56	85	31220	30845
								81-85	17'-1"	15'-0"	56	85	36655	32250
								86-90	17'-1"	15'-0"	63	92	40715	33300
								91-95	17'-1"	15'-0"	63	92	44885	34380
96-100	17'-1"	15'-0"	63	92	46955	34925								
25	3131-1626 3131-2626 3131-3626 3131-4626	17 24 33 46 *	2995 3105 3545 3685	4'-7"	3'-2"	3'-1"	Single Speed: 11	-20	11'-2"	9'-6"	20	48	6535	26430
								21-25	11'-2"	9'-6"	24	52	7795	27655
								26-30	11'-2"	9'-6"	27	56	10010	28815
								31-35	11'-2"	9'-6"	28	56	13075	30015
								36-40	11'-2"	9'-6"	39	67	12115	30100
								41-45	11'-2"	9'-6"	43	71	13920	30800
								46-50	11'-2"	9'-6"	47	75	15975	31520
								51-55	14'-1"	12'-0"	50	78	20325	32770
								56-60	14'-1"	12'-0"	48	76	22600	33475
								61-65	14'-1"	12'-0"	51	79	25545	34330
								66-70	14'-1"	12'-0"	55	83	27740	34980
								71-75	14'-1"	12'-0"	56	84	31370	35975
								76-80	14'-1"	12'-0"	57	85	34600	36855
								81-85	17'-1"	15'-0"	58	86	39665	38190
								86-90	17'-1"	15'-0"	63	91	42500	38960
								91-95	17'-1"	15'-0"	63	91	46655	40050
96-100	17'-1"	15'-0"	63	91	50425	41040								
30	3141-1626 3141-2626 3141-3626 3141-5626	17 26 42 55 *	3875 3985 4425 4565	5'-9"	3'-4"	2'-11"	Single Speed: 11	-20	11'-5"	9'-6"	25	61	7725	32100
								21-25	11'-5"	9'-6"	25	61	9890	33665
								26-30	11'-5"	9'-6"	28	64	11745	34810
								31-35	11'-5"	9'-6"	39	75	11980	35355
								36-40	11'-7"	9'-6"	42	78	13940	36245
								41-45	14'-1"	12'-0"	45	81	16330	37090
								46-50	14'-1"	12'-0"	50	86	18700	37915
								51-55	14'-1"	12'-0"	51	87	20885	38645
								56-60	14'-1"	12'-0"	51	87	24100	39600
								61-65	14'-1"	12'-0"	54	90	26655	40375
								66-70	14'-1"	12'-0"	57	93	29630	41230
								71-75	14'-1"	12'-0"	62	98	32945	42155
								76-80	14'-1"	12'-0"	62	98	37635	43415
								81-85	17'-1"	15'-0"	63	99	41000	44330
								86-90	17'-1"	15'-0"	63	99	45550	45535
								91-95	17'-1"	15'-0"	67	103	49385	46555
96-100	17'-1"	15'-0"	67	103	53845	47720								

* Note: Crane wheel base (B) may vary with these hoist selections.

HOIST DATA								CRANE DATA							
Crane Capacity (Tonnes)	Hoist Model	Available Lift Height (ft.)	Trolley Hoist Weight (lbs.)	C	E	F	Hoist Speed (ft./min.)	SPAN (ft.)	A	B	D (in.)	G (in.)	Crane Weight Excluding Hoist (lbs.)	Maximum Static Wheel Load (lbs.)	
40	3141-1826 3141-2826 3141-3826 3141-5826	13 20 31 41 *	4150 4260 4810 5185	5'-1" 5'-1" 5'-1" 5'-1"	3'-5" 3'-5" 3'-5" 3'-5"	3'-0" 3'-0" 3'-0" 3'-0"	Single Speed: 8	-20	11'-5"	9'-6"	28	64	8375	41700	
								21-25	11'-5"	9'-6"	28	64	10140	43535	
								26-30	11'-5"	9'-6"	39	75	10855	44645	
								31-35	11'-7"	9'-6"	43	79	12698	45775	
								36-40	14'-1"	12'-0"	46	82	15370	46940	
								41-45	14'-1"	12'-0"	51	87	18310	48065	
								46-50	14'-1"	12'-0"	51	87	20195	48845	
								51-55	14'-1"	12'-0"	53	89	23320	49885	
	Two Speed: 8 & 2.5	56-60	14'-1"	12'-0"	55	91	26470	50880							
		61-65	14'-1"	12'-0"	59	95	29580	51840							
		66-70	14'-1"	12'-0"	63	99	32610	52750							
		71-75	14'-1"	12'-0"	63	99	37975	54225							
		76-80	14'-1"	15'-0"	63	99	41460	55210							
		81-85	17'-1"	15'-0"	63	99	48455	57060							
		86-90	17'-1"	15'-0"	67	103	51495	57915							
		91-95	17'-1"	15'-0"	70	106	55160	58915							
96-100	17'-1"	15'-0"	75	111	58760	59885									
50	3171-1626 3171-2626 3171-4626 3171-5626 3171-6626	22 33 44 49 * 58 *	5610 6160 6820 6930 7425	6'-10" 6'-10" 6'-10" 6'-10" 6'-10"	4'-8" 4'-8" 4'-8" 4'-8" 4'-8"	3'-4" 3'-4" 3'-4" 3'-4" 3'-4"	Single Speed: 11	-20	11'-7"	9'-6"	28	72	9055	51290	
								21-25	11'-7"	9'-6"	31	75	11100	53740	
								26-30	14'-1"	12'-0"	39	83	12590	55400	
								31-35	14'-1"	12'-0"	43	87	14800	56875	
								36-40	14'-1"	12'-0"	47	91	17270	58190	
								41-45	14'-1"	12'-0"	51	95	19545	59295	
								46-50	14'-1"	12'-0"	53	97	22845	60550	
								51-55	14'-1"	12'-0"	56	100	26185	61735	
	Two Speed: 11 & 2	56-60	14'-1"	12'-0"	58	102	30560	63125							
		61-65	14'-1"	12'-0"	63	107	33660	64150							
		66-70	14'-1"	12'-0"	63	107	39610	65850							
		71-75	14'-1"	12'-0"	65	109	43250	66940							
		76-80	14'-1"	12'-0"	68	112	46920	68020							
		81-85	17'-1"	15'-0"	75	119	51445	69295							
		86-90	17'-1"	15'-0"	75	119	56600	70710							
		91-95	17'-1"	15'-0"	75	119	62420	72280							
96-100	17'-1"	15'-0"	75	119	70805	74480									
60	3161-1826 3161-2826 3161-4826 3161-5826 3161-6826	16 25 33 37 * 44 *	6050 6600 7370 7480 8030	6'-10" 6'-10" 6'-10" 6'-10" 6'-10"	3'-9" 3'-9" 3'-9" 3'-9" 3'-9"	3'-3" 3'-3" 3'-3" 3'-3" 3'-3"	Single Speed: 10	-20	11'-7"	9'-6"	28	76	9600	60865	
								21-25	14'-1"	12'-0"	39	87	10855	63490	
								26-30	14'-1"	12'-0"	39	87	13160	65605	
								31-35	14'-1"	12'-0"	43	91	15485	67285	
								36-40	14'-1"	12'-0"	50	98	17780	68685	
								41-45	14'-1"	12'-0"	50	98	20705	70055	
								46-50	14'-1"	12'-0"	55	103	23265	71210	
								51-55	14'-1"	12'-0"	58	106	26505	72440	
	Two Speed: 10 & 2	56-60	14'-1"	12'-0"	58	106	31260	73980							
		61-65	14'-1"	12'-0"	63	111	34620	75120							
		66-70	14'-1"	12'-0"	63	111	38970	76455							
		71-75	14'-1"	12'-0"	63	111	44610	78085							
		76-80	14'-1"	12'-0"	69	117	47520	79010							
		81-85	17'-1"	15'-0"	75	123	53710	80725							
		86-90	17'-1"	15'-0"	75	123	58970	82190							
		91-95	17'-1"	15'-0"	75	123	66575	84225							
96-100	17'-4"	15'-0"	75	123	74400	86305									
70	3171-1826 3171-2826 3171-4826 3171-5826 3171-6826	16 25 33 37 * 44 *	6050 6600 7370 7480 8030	6'-10" 6'-10" 6'-10" 6'-10" 6'-10"	3'-9" 3'-9" 3'-9" 3'-9" 3'-9"	3'-3" 3'-3" 3'-3" 3'-3" 3'-3"	Single Speed: 8	-20	11'-7"	9'-6"	31	79	10025	70155	
								21-25	14'-1"	12'-0"	39	87	11315	73190	
								26-30	14'-1"	12'-0"	39	87	13635	75515	
								31-35	14'-1"	12'-0"	45	93	16035	77385	
								36-40	14'-1"	12'-0"	50	98	18945	79080	
								41-45	14'-1"	12'-0"	52	100	21890	80550	
								46-50	14'-1"	12'-0"	57	105	24645	81830	
								51-55	14'-1"	12'-0"	59	107	29065	83420	
	Two Speed: 8 & 1	56-60	14'-1"	12'-0"	62	110	32650	84720							
		61-65	14'-4"	12'-0"	63	111	38315	86480							
		66-70	14'-4"	12'-0"	63	111	42730	87880							
		71-75	14'-4"	12'-0"	66	114	47745	89390							
		76-80	14'-4"	12'-0"	68	116	52985	90920							
		81-85	17'-7"	15'-0"	77	125	60025	92880							
		86-90	17'-7"	15'-0"	77	125	66265	94610							
		91-95	17'-7"	15'-0"	77	125	75015	96955							
96-100	17'-7"	15'-0"	77	125	81085	98615									

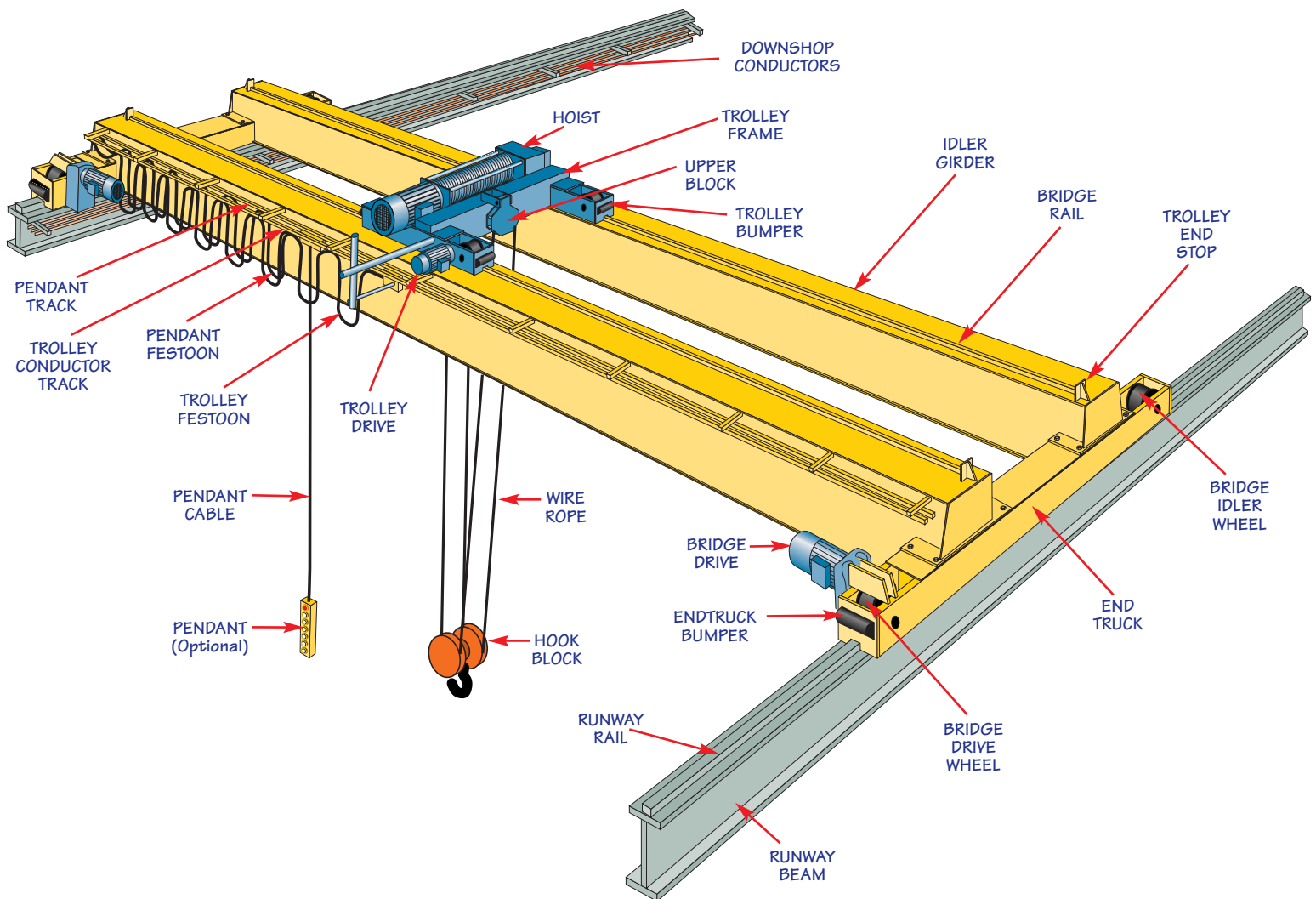
* Note: Crane wheel base (B) may vary with these hoist selections.

Higher capacities available upon request.



Top Running, Double Girder Overhead Cranes

Crane Component Diagram



Technical Description

- **MUNCK CRANES INC.** is recognized as a quality manufacturer of wire rope hoists and overhead traveling cranes.
- **MUNCK** cranes are in use in a wide range of lifting applications from the lightest duty to severe industrial applications.
- The New Generation of Heavy Industrial Cranes from **MUNCK** is a result of over 80 years of experience and a total devotion to this market.
- Utilizing the latest technology, the **MUNCK** line of Heavy Duty Electric Wire Rope Hoists and Cranes are manufactured to provide a high performance lifting system.
- The **MUNCK** product provides reliable service in more than 60 countries world wide.
- The **MUNCK** crane is a heavy duty, low maintenance crane. Its rugged construction and space saving design provide maximum utilization of available area.

STEEL CONSTRUCTION

- The bridge girder of every **MUNCK** crane is designed to the current CMAA specifications and can be engineered to meet other local codes and regulations.
- Both rolled structural shapes and welded plate box girder designs are used depending on design requirements.
- Box girders are fabricated from 44W steel.

END TRUCKS

- The crane end trucks are manufactured from structural sections and are jig assembled to ensure alignment of bearings and axles.
- Dual motor bridge drives are standard. Other drive types are available upon request.
- Bridge to End Truck connections are bolted.
- Bridge wheels are flanged with anti-friction bearings.
- Rail sweeps and rubber bumpers are standard on all end trucks.

HOISTING MACHINERY

- The hoisting machinery consists of a **MUNCK** heavy duty industrial type standard wire rope hoist unit mounted on a low headroom type trolley.
- Motors are totally enclosed fan cooled, hoist duty with Class "F" insulation.
- Gears are precision machined from alloy steel and induction hardened. All gearing is enclosed in a rugged steel housing and is oil splash lubricated.
- Steel wire rope drums are precision machined.
- Rope drums are available in both single & double grooved configurations.
- Hoists are equipped with rope guides to prevent over lapping of the rope on the drum and to extend rope life.
- Upper and lower hoisting limit switches are standard equipment.
- The trolley is fabricated from structural shapes and plates to suit the application.

MOTORS

- All motors are specifically designed for hoist and crane duty.
- All motors are totally enclosed fan cooled with Class "F" insulation.

BRAKES

- All trolley and bridge drive motors have disc brakes as standard equipment.
- All hoists have two braking systems, one control brake and one holding brake.

CONTROLS

- Each crane is supplied with a radio control as standard equipment.
- Other types of controls such as cab control, infrared, or pendant control station sliding on independent track are available.
- Munck Cranes are supplied with variable speed controls for the trolley and bridge motions. The hoist is supplied with a 2-speed configuration.
- The electrical components are housed in electrical cabinets to suit the applicable environment.

BRIDGE ELECTRIFICATION

- Bridge electrification is provided via a flat cable festoon system suspended from a track as standard equipment.

SURFACE TREATMENT

- The hoist is finished in enamel paint.
- The crane steel structure is thoroughly wire brushed and finished with anti-corrosion paint.

OPTIONAL FEATURES

The following features can be supplied:

- Overload Switch
- Power Circuit Limit Switch
- Rotation Warning Beacon
- Anti-Collision Equipment
- Runway Electrification
- Travel Limits for Bridge & Trolley
- Weighing Equipment
- Variable Speed Hoist Control
- 2 Speed Bridge & Trolley Motions
- Bridge Lights
- Warning Horn or Bell

Other options are available on request.

RUNWAY SYSTEMS

- Custom designed to suit many applications as part of a "Total Crane System" package.

Munck Cranes Inc.

403 Dewitt Rd.
Stoney Creek, Ontario
Canada
L8E 4B9

Phone: (905) 561-2100
Toll Free: 1-866-370-5831
Fax: (905) 561-1238
Internet: www.munckcranes.com
E-mail: sales@munckcranes.com

